



SOUTH PLACE HOTEL

Meetings & Events

South Place Hotel's seven private dining and meeting rooms are all situated on the first floor and combine distinctive, Conran-designed interiors with all the technical, AV and practical functionality you might require. Ideal for private dining and corporate entertaining, all of the rooms are equally suited to day meetings, presentations and product launches.

The rooms can accommodate groups of between six and 200 people, or the whole of the first floor can be hired for up to 400 guests.

Contents

<i>Meetings & Private Dining</i>	<i>4 - 5</i>
<i>Parties & Exclusive Hire</i>	<i>6 - 7</i>
<i>Solo & Kuryakin</i>	<i>9 - 10</i>
<i>Peel, Purdey & Steed</i>	<i>11 - 12</i>
<i>Secret Garden & Le Chiffre</i>	<i>13 - 14</i>
<i>Floorplans, Capacities & Dimensions</i>	<i>backcover</i>



MEETINGS & PRIVATE DINING



Meetings South Place Hotel's meeting rooms can accommodate boardroom-style groups of six to 40 people. For larger presentations and meetings, Purdey and Steed interconnect to provide theatre-style set-ups that seat up to 100. All of the rooms include a panelled wall behind which you will find cloakroom storage and full audio-visual facilities, including either a 55-inch Bang & Olufsen television or drop-down screen and projector.

Clockwise from top: Angler Terrace; drinks in 3Bar; champagne for a drinks reception

Private Dining

South Place is the first hotel from restaurateurs D&D London, and food is a particular passion.

Our private dining menus have been specially created for different needs and occasions, from a working lunch to a five-course dinner. Needless to say, if you are looking for something very specific, our chefs will work with you to ensure that we deliver.

For larger parties and corporate entertaining, Purdey and Steed interconnect to create a space for up to 200 guests, or you can hire the whole of the first floor for parties of up to 400.



Clockwise from top: Dinner in Angler; cocktails from the Secret Garden; PEEL

PARTIES & EXCLUSIVE HIRES



Parties Let your imagination run wild and leave the hard work to us: we can help you host the ultimate house party to for up to 1,000 people, where you and your guests can eat, drink and make merry, before tumbling into bed in one of the hotel's 80 luxurious bedrooms. Of course, we can also help you with smaller parties, whether you are celebrating a birthday, hosting a staff summer party or Christmas knees-up, or launching a product to press.



Clockwise from far left: DJs on Angler Terrace; Christmas party at SPH; DJs in the secret garden

Exclusive Hire On special occasions, our two restaurants are available for exclusive hire. Up on the top floor you will find Angler restaurant and rooftop terrace, which can be all yours for up to 80 people (seated) or 200 (standing). On the ground floor, 3 South Place & 3Bar is ideal for parties with a standing capacity of 300.



Clockwise from far left: Angler Terrace; Angler; 3Bar; 3Bar



SOLO



Clockwise from top: Solo during a wedding reception; Solo set for a meeting; Solo pool balls



Solo

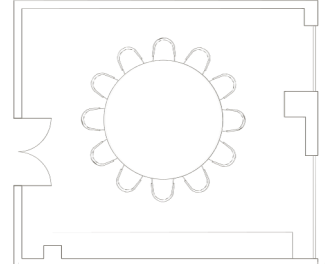
The smallest of our five private dining and meeting rooms seats up to 16, and the table flips over to make a billiard table perfect for a drinks reception for up to 20 people

This room is named after Napoleon Solo (the original Man from U.N.C.L.E.).

KURIYAKIN



Kuriyakin



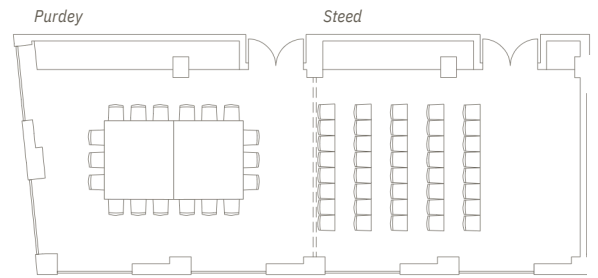
Room name	Solo	Kuriyakin
Sqm	37	61
L	6.85 m	7.1m
W	5.34m	8.68 m
H	2.55m	2.55m

Kuriyakin

Otherwise known as the red room, and for obvious reasons: it can seat up to 20 people around the stunning, red lacquer table, and the room is fully equipped with a plasma screen. This room is named after Napoleon Solo's side-kick, Ilya Kuriyakin.



PURDEY & STEED



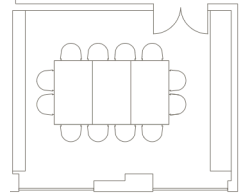
Purdey & Steed

Named after John Steed and his sidekick, Purdey from The New Avengers, these two rooms interconnect to create a single space that seats up to 100 people or up to 200 guests for a standing reception. Each room benefits from floor-to-ceiling windows and full AV, including drop-down screens and black-out curtains. These versatile rooms can be used for theatre-style presentations, large boardroom meetings, dinners, cocktail receptions and parties.



PEEL

Peel



Peel

Named after glamorous Emma Peel from The Avengers, this room seats up to 20 and is made instantly memorable by the wall of silver birch trunks and a striking, bespoke chandelier resembling a giant hat from Ladies' Day at Ascot.

Room name	Purdey & Steed	Purdey	Steed	Peel
Sqm	114	56	58	37
L	16.31m	8.03m	8.28m	6.67m
W	6.98m	6.98m	6.98m	5.34m
H	2.55m	2.55m	2.55m	2.55m

THE SECRET GARDEN

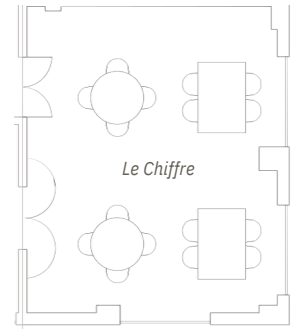


Secret Garden

Known as The Secret Garden is an outside bar available for private hire for up to 80 guests. Discreet wall mounted heaters and a retractable roof maintain our weatherproof garden all year round.



LE CHIFFRE



Room name	Secret Garden	Le Chiffre
Sqm	72	63
L	7.50m	2.85m
W	8.30m	3.56m
H	3.80m	2.85m



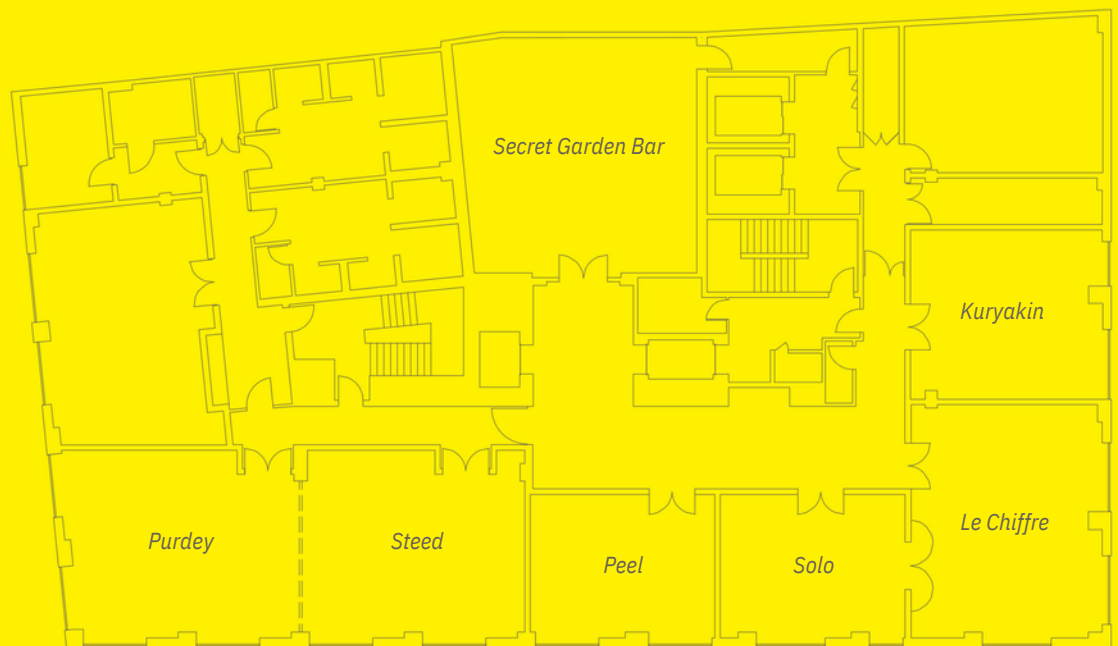
Le Chiffre

Our library bar and lounge is a cosy and intimate den. A private speakeasy for one night only, perfect for casual parties. Throw open the double doors and Le Chiffre connects to Solo, a great addition for games when setup in 'billiards mode'.

Top to Bottom: Le Chiffre Bar, Le Chiffre & Solo



FLOORPLANS, CAPACITIES & DIMENSIONS



Room name	Purdey & Steed	Purdey	Steed	Peel	Solo*	Kuryakin	Secret Garden	Le Chiffre*
Sqm	114	56	58	37	37	61	72	63
L	16.31m	8.03m	8.28m	6.67m	6.8m	7.1m	7.50m	2.85m
W	6.98m	6.98m	6.98m	5.34m	5.3m	8.68m	8.30m	3.56m
H	2.55m	2.55m	2.55m	2.55m	2.5m	2.55m	3.80m	2.85m
Theatre	100	50	50	-	-	-	-	-
Boardroom	40	24	24	20	16	20	-	-
Cabaret	50	24	24	-	-	-	-	-
Dinner	100	40	40	20	16	20	40	30
Reception	200	80	80	-	-	-	80	60
Lounge Seating	-	-	-	-	-	-	30	20

* Solo & Le Chiffre can be booked together for a reception capacity of 90.

** Entire first floor can be booked via exclusive hire with a maximum standing capacity of 400.